

DECK MACHINERY

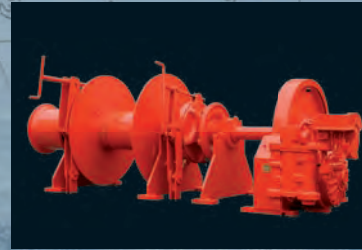
- with • Low-Pressure Hydraulic Drive
- Medium-Pressure Hydraulic Drive
- High-Pressure Hydraulic Drive
- A.C. Electric Drive

Combined Anchor-Mooring Winches, Anchor Capstans and Windlasses:

For chains of 20-132 mm and with a mooring capacity of between 30 and 500 kN.

Mooring Winches and Capstans:

Single or double drum design, split and non-split designs. Auto-tension for all winches.

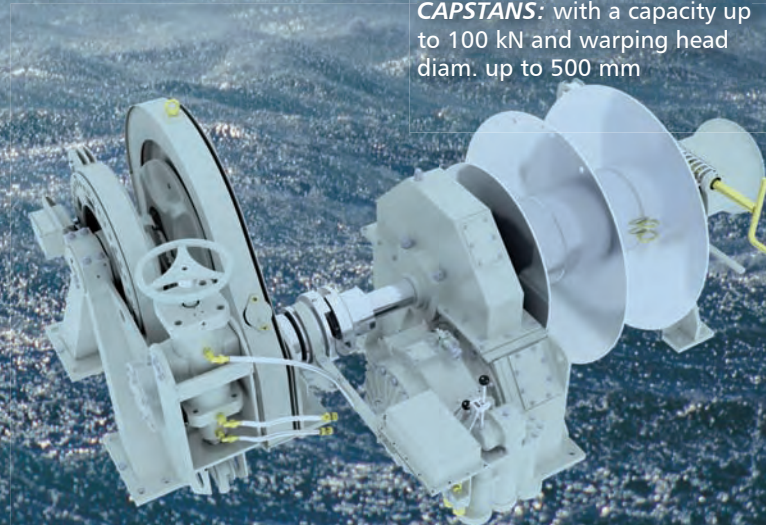
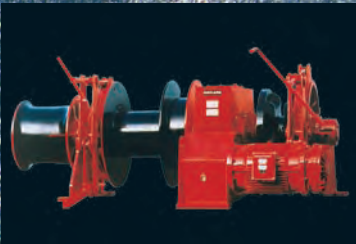


Powerful Machinery

MADE BY **HATLAPA**

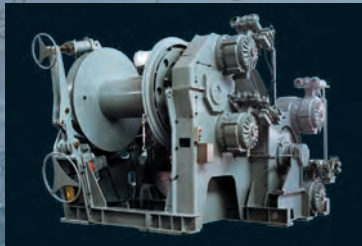
CAPSTANS: with a capacity up to 100 kN and warping head diam. up to 500 mm

Winches with Frequency Inverter-Controlled A.C. Motor: Patent protected, for stepless speed control.



DECK MACHINERY

- with • Low-Pressure Hydraulic Drive
• Medium-Pressure Hydraulic Drive
• High-Pressure Hydraulic Drive
• A.C. Electric Drive



Towing Winches:

Single and double drum
in waterfall design, and tailor-made to
customer requirements.



Low-Pressure Hydraulic Motor:

For mooring, towing
and offshore winches, and
other purposes.



Research Winches:

For all special requirements and purposes,
they are also available with
HATLAPA's special spooling system
for universal reeling of wires, cables, and
hoses with different diameters.



Deck machinery has to
be extremely reliable.
With this in mind,
HATLAPA's equipment is
designed for long life and
high reliability. Its superb
quality is proven on their
modern test bench.

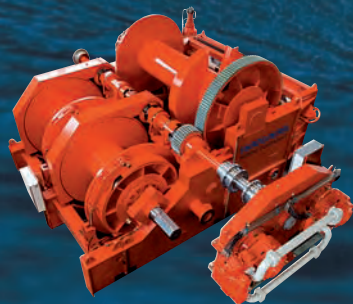
OFFSHORE POWER

HATLAPA has developed a wide range of Anchor-Handling and Towing-Winches and is one of 2 low-pressure hydraulic suppliers in the world. This drive system has been proven for decades on merchant vessels and workboats.

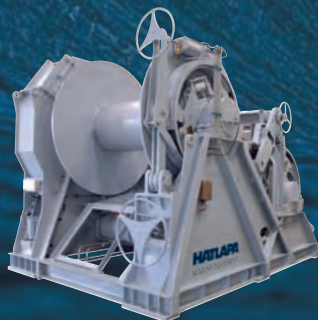


Experience

MADE BY **HATLAPA**



PAL-PULL



ECO-PULL



SECONDARY WINCHES
1700LPH



SECONDARY WINCHES
1300E

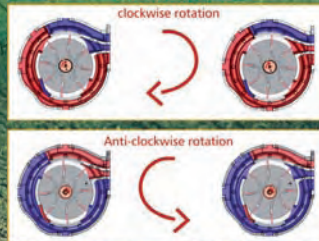
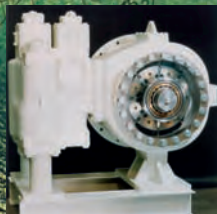
Strongest power

MADE BY HATLAPA

HLP 440 motor: technical data

| | |
|------------------------|-------------|
| Displacement: | 60 l/rev. |
| Flow rate (at max.): | 5,400 l/min |
| Max. working pressure: | 64 bar |
| Max. rpm: | 170 1/min |
| Max. torque: | 49,050 Nm |

And to cover the complete range:
HATLAPA offers 12 l and 20 l motors.



Our AHT-winchs are available with 2 or 3 drums, in waterfall or reverse-waterfall design and with low-pressure hydraulic or electric-stepless drives.

Line pulls from 40 tons to 600 tons are available with equivalent rope and chain diameters.

On the AHT-winchs we use up to 6 low-pressure hydraulic motors, each offering 440kW powered by modern pump technology, all „Made in Germany“.

Reliability at its best!

PAL-PULL



Strongest power

MADE BY

HATLAPA
*environmentally
friendly*



HATLAPA-STEPLESS:
AHT winches with electric-frequency
controlled drive.

30% less installed power.....
30% less power consumption....
compared to hydraulic drives:
- less fuel consumption
- less emissions
- smaller diesel generators on board
and lower costs at shipbuilding

30%

ECO-PULL1000
ECO-PULL2000
ECO-PULL3000
ECO-PULL4000
ECO-PULL5000
ECO-PULL5000ex

